

Knitting Skills Contest Patterns

Phase 1: Garter Stitch

Cast on 18 stitches.

Knit each row for 4 inches. (Garter stitch)

Bind off and work in loose ends.

Phase 2: Bias Binding

Cast on 10 stitches

Row 1: Inc 1 st in 1st st, by knitting in the front then the back of the stitch, K7, K2 tog.

Row 2: Purl all sts.

Repeat these two rows until piece is 2 inches long. Bind off and work in loose ends.

Phase 3: Pick up Stitches

Cast on 12 sts.

Row 1: K

Row 2: P

Repeat row 1 and 2 for 21 rows. Bind off. With Right side of stockinette facing you, pick up and K 17 on either side of swatch.

Row 1: K1, P1 across.

Row 2: P1, K1 across.

Repeat rows 1 and 2 twice. Bind off and work in loose ends.

Phase 4.1: Cable Stitch (first year skill level 4)

Cast on 23 sts.

Rows 1 and 3: S1, P3, K6, P3, K6, P3, K1.

Rows 2 and 4: S1, K3, P6, K3, P6, K4.

Row 5: S1, P3, S the next 3 sts onto a cable needle and leave at front of work, K3 sts, then K3 sts from cable needle, P3, S the next 3 sts onto a cable needle and leave at back of work, K3 sts, K3 sts from cable needle, P3, K1.

Row 6: Repeat row 2.

Repeat row 1 through row 6 three times. Bind off in pattern and work in loose ends.

Phase 4.2: Multiple of 10 stitches (second year skill level 4)

Recommended time: 45 minutes

Cast on 20 sts.

Row 1: and all uneven numbered rows - wrong side- P.

Row 2: *K2, yo, K1, **K2 tog twice**, K1, yo, K2; repeat from * to end.

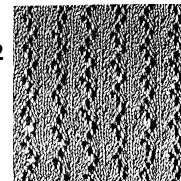
Row 4: *K3, yo, K2 tog twice, yo, K3; repeat from* to end.

Row 6: *K2 tog, K1, yo, K4, yo, K1, K2 tog; repeat from * to end.

Row 8: *K2 tog, yo, K6, yo, K2 tog; repeat from * to end.

Repeat these 8 rows from pat until 24 rows - about 4 ins from beg., end on right side with pat row. Bind off as to P. Work in loose ends.

4.2



Phase 5.1: Knitting with Colors (first year skill level 5)

Recommended time: 45 minutes

Cast on 19 sts.

Row 1: K

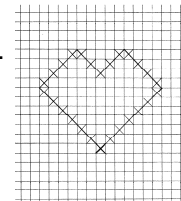
Row 2: P

Repeat row 1 and 2 twice

Row 7: Join color as needed and work in stockinette stitch following chart for design (11 rows).

Work remaining rows in stockinette stitch. Bind off and work in loose ends.

5.1



Phase 5.2: Knitting with Colors (second year skill level 5)

Recommended time: 45 minutes

Cast on 19 sts.

Row 1: K

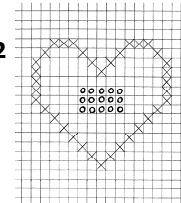
Row 2: P

Repeat rows 1 and 2.

Row 5: Join colors as needed and work in stockinette stitch following chart for design (14 rows).

Work remaining rows in stockinette stitch. Bind off and work in loose ends.

5.2



Phase 6: Knitted edge

Recommended time: 45 minutes

Cast on 10 sts.

Row 1: K2, P2 tog, yo, K2, P2 tog, yo, K2. (Always count each yo as one st)

Row 2: Repeat first row.

Row 3: Bind off 2 sts (one st remains on right-hand needle) P1, K2, P2 tog, yo, K2. 8 sts on needle

Row 4: K2, P2 tog, yo, K2, yo, P2 tog.

Row 5: Bind off 2 sts. (One st remains on right-hand needle) K1, P2 tog, yo, K2. 6 sts on needle.

Row 6: K2, P2 tog, yo, K2, cast on 2 sts. 8 sts on needle.

Row 7: P2 tog, yo, K2, P2 tog, yo, K2.

Row 8: K2, P2 tog, yo, K2, P2, cast on 2 sts. 10 sts on one needle.

Repeat these 8 rows 5 times.

Next: work rows 1 through 3.

Bind off in Row 4 pattern without the 2 yo.

Work in loose ends.